
en Translation of the
original instructions
PUMP Lutz B2 Vario

Type

Lutz B2 Vario PP 32-SL
Lutz B2 Vario PVDF 32-SL
Lutz B2 Vario SS 28-SL



Please read this manual before starting up.

To be retained for future reference.

 IP24



CE UKCA EMC

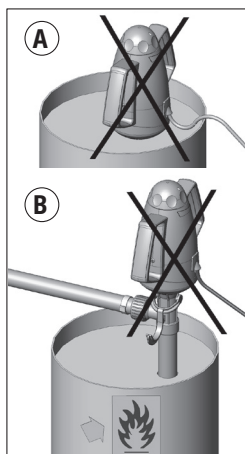


Fig. 1

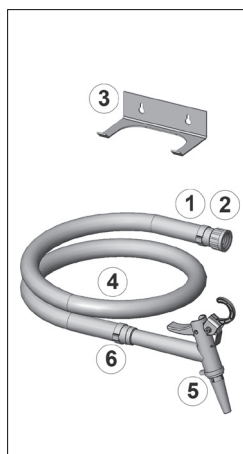


Fig. 2

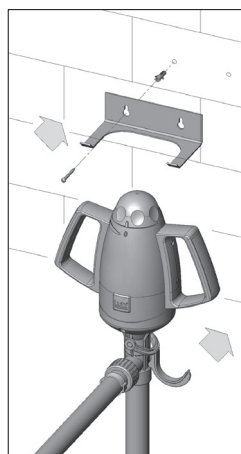


Fig. 3

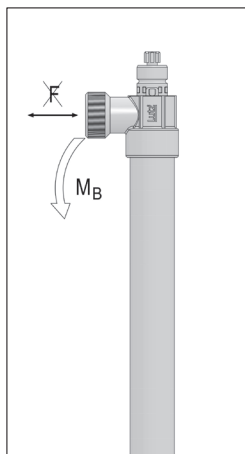


Fig. 4

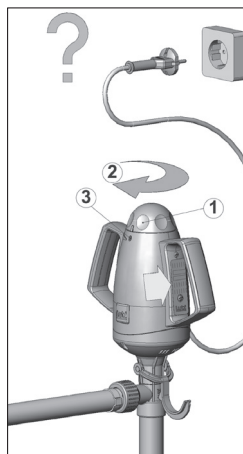


Fig. 5

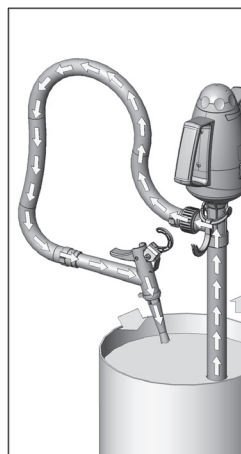


Fig. 6

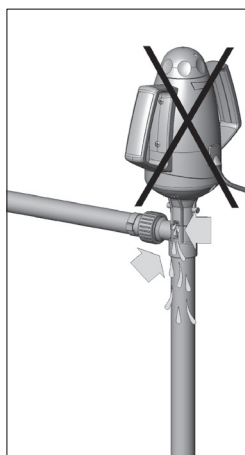


Fig. 7

Table of Contents

- 1. Concerning this manual 4
 - 1.1 Terms 4
 - 1.2 Target groups 4
 - 1.3 Associated applicable documents 4
 - 1.4 Warnings and symbols 4
 - 1.5 Latest state 4
 - 1.6 Copyright..... 4
- 2. Safety 5
 - 2.1 General safety information..... 5
 - 2.2 Proper use 6
 - 2.3 Specific danger 7
- 3. Configuration and function..... 7
 - 3.1 Rating plate 7
 - 3.2 Configuration 8
- 4. Transport and storage..... 8
 - 4.1 Transport 8
 - 4.2 Storage 8
- 5. Installation/Assembly and connection..... 8
 - 5.1 Fixing of the pump tube 8
 - 5.2 Safe use 9
 - 5.3 Connect pump electrically 9
- 6. Operation 9
 - 6.1 Starting/interruption, speed control 9
 - 6.2 Overload of the pump 9
 - 6.3 Taking out of operation 9
- 7. Maintenance and servicing..... 10
 - 7.1 Observance..... 10
- 8. Repairs 10
 - 8.1 Sending the pump to the manufacturer 10
- 9. Waste disposal 10
- 10. Annex 11
- Declaration of conformity..... 19
- UK Declaration of Conformity.....

1. Concerning this manual

This manual

- is part of this product
- is valid for all mentioned series
- describes the safe and proper use in all operating stages

1.1 Terms

User: Single person or organisation who is using the products e.g. customer, user, assistant

Children: Young persons up to and including the age of 14 years.

1.2 Target groups

Target group	Task
User	<ul style="list-style-type: none"> ▶ Retain these operating instructions at the product's place of use for future reference. ▶ Demand the staff to read and observe these instructions and the additional valid documents, in particular the safety information and warnings. ▶ Observe additional regulations and instructions concerning the plant.
Qualified personnel, installer	<ul style="list-style-type: none"> ▶ Read, observe and follow these instructions and the additional valid documents, in particular the safety information and warnings.

Tab. 1: Target groups and their tasks

1.3 Associated applicable documents



Document	Purpose
Supplementary operating instructions	for additional delivered components

Tab. 2: Associated applicable documents and purpose

1.4 Warnings and symbols

Warning	Level of risk	Consequences in case of non-compliance
DANGER	direct danger	death or serious injury
WARNING	possible direct danger	death or serious injury
CAUTION	possible dangerous situation	light injury
NOTICE	possible dangerous situation	damage of property

Tab. 3: Warnings and consequences in case of non-compliance

Symbol	Meaning
	Safety information ▶ Comply with all measures that are marked with a safety sign to prevent injuries or death.
	Information / Recommendation
▶	What to do
→	Cross reference
✓	Requirement

Tab. 4: Symbols and meaning

1.5 Latest state

Please find the latest state of this operating instruction under www.lutz-pumpen.de.

1.6 Copyright

The content of this operating instruction and the images contained in them are subject to the copyright protection of Lutz Pumpen GmbH.

2. Safety

The manufacturer will not be held responsible for any damages resulting from non-compliance of the overall documentation, in particular for damages in case of non-compliance of the operating instructions.

2.1 General safety information

Observe following regulations before accomplishing all activities.

Product safety

The pump is constructed in conformity with the state of the art and approved safety-related standards. Danger however can occur during use for life and health of the user or third parties or damage of the pump and other material assets. Therefore:

- Operate the pump only in a technically sound state, for its proper use, and conscious of safety and hazards taking into account these instructions.
- Ensure that these instructions and all associated applicable documents are complete, legible, and stored in a place that personnel can access at all times.
- Refrain from any manner of working that endangers personnel or uninvolved third parties.
- In the case of a safety-relevant malfunction, stop the pump immediately and enlist a responsible person to rectify the malfunction.
- In addition to the overall documentation, observe the statutory or other safety and accident prevention regulations, as well as the valid standards and guidelines of the respective operating country.

Modifications

Unless the manufacturer has provided its consent in writing, the manufacturer is not liable for interventions performed by the user (modifications) on the product, such as conversion, alteration, new design, etc. Modifications not agreed with the manufacturer may have the following effects, among others:

- Functional impairments on the appliance or plant
- Damage to the appliance and other property damage
- Environmental damage
- Personal injuries right through to death

Duties of the operator

Safety-conscious working

- Operate the pump only in a technically sound state, for its proper use, and conscious of safety and hazards taking into account these instructions.
- Ensure observance and monitoring of:
 - Proper use
 - Statutory or other safety and accident prevention regulations
 - Safety provisions in handling hazardous substances
 - Valid standards and guidelines in the respective country of operation
- Provide protective equipment.

Personnel qualification

- This device must not be used by children. It may be used by persons of reduced physical, sensory or mental capacity or by persons lacking in experience or knowledge provided that they are supervised or have been instructed in the safe use of the device and understand the associated hazards. Cleaning or user maintenance must not be performed by children.

- Ensure that personnel tasked with work on the pump have read and understood these instructions and all associated applicable documents, particularly safety, maintenance and servicing information, before they start work.
- Clarify responsibilities, competencies and monitoring of the personnel.
- Ensure that all work is carried out by technical qualified personnel only:
 - Assembly, servicing, maintenance work
 - Work on the electrics
- Instruct inexperienced personnel in the use of the pump before allowing them to operate it for the first time.

Safety devices

- Provide the following safety devices and ensure their function:
 - with possible electrostatic charge: Provide the corresponding earthing.

Statutory warranty

- During the guarantee period, obtain the manufacturer's permission for modifications, maintenance work or alterations.
- Use only original components or components authorized by the manufacturer.

Duties of the personnel

- Observe the notices on the pump and maintain them in a legible state, e.g. rotation arrow, marking for fluid connections.
- Use protective equipment where necessary.
- Do not reach into the intake port of the pump.
- Only perform work on the pump during downtime.
- After completing all the work on the pump, remount the safety devices in accordance with specifications.

2.2 Proper use

The drum pump Lutz B2 Vario is a sealless, vertical centrifugal pump with axially acting rotor. The pump is only used to transfer pure, turbid, water-like, aggressive and non aggressive liquids.

- The apparatus is provided for commercial use only.
 - Pump is not allowed to be operated in explosion hazard areas.
 - Do not use for pumping flammable liquids.
 - Pump may only be installed in an upright position.
 - Pump is a hand-held appliance and must not be left unattended.
 - Pump is intended for indoor use only.
-
- Pump may only be used to pump the agreed liquids (→ contract data sheet, → technical data table 7).
 - Observe the technical data of the motor (→ table 8).
 - Dry running must be avoided.
 - Ensure that the pump is commissioned only with liquid and is never operated without pump medium.

If the product and supplied accessories are used for other purposes than the intended purpose, it is the responsibility of the user to check the suitability and admissibility. Product use not confirmed in writing by the manufacturer absolves the manufacturer of any liability.

The manufacturer is not liable for consequences of incorrect treatment, use, maintenance, servicing and operation of the appliance, as well as normal wear and tear. The same applies if faults arise from intervention or configurations on the part of the user not confirmed by the manufacturer.

Prevention of obvious misapplication (examples)

- Observe and comply with the operating limits of the pump in terms of temperature, pressure, delivery rate and speed (→ Appendix, table 7; contract data).
- The power consumption of the pump increases with increasing density or viscosity of the liquid. To prevent an overload of the pump, coupling and motor, comply with the permissible density and viscosity (→ Appendix, table 7). A lower density and viscosity is allowed.
- The pump is not approved for use in or on swimming pools, garden ponds, etc.
- The motor must not be immersed in the liquid being pumped (→ Fig. 1A).
- It is not allowed to handle flammable liquids (→ Fig. 1B).
- Do not use the pump tube to lift objects.

2.3 Specific danger

Dangerous media

- When pumping dangerous media (e.g. hot, dangerous to health) observe safety regulations for handling hazardous substances.
- Always wear protective equipment when working on the pump.

3. Configuration and function

3.1 Rating plate

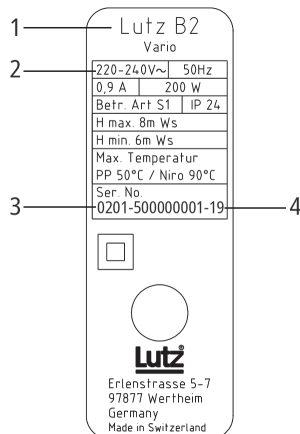


Fig. 8: Rating plate (example)

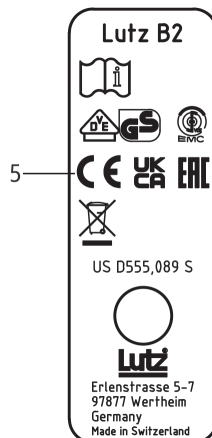


Fig. 9: Label (example)

- 1 Type
- 2 Technical data
- 3 Serial number
- 4 Year of construction of the pump (last two digits of the serial number e.g. -19 for 2019)
- 5 CE-Identification

3.2 Configuration

An electric drum and container pump comprises a drive motor and a pump tube.

Following different versions are available:

- **Materials**
 - Polypropylene (PP)
 - Stainless steel (SS 1.4571)
 - Polyvinylidene fluoride (PVDF)

4. Transport and storage

4.1 Transport

- Unpacking and checking condition of delivery
- Unpack the pump on receipt and check for transport damages.
 - Report transport damages to the manufacturer immediately.
 - Check that the consignment is complete as ordered.

The following is included in the scope of supply of the pump with 3 m connecting cable and plug (→ Fig. 2):

Pump Lutz B2 Vario	Pump Set Lutz B2 Vario	Item No.:
1 hose connector for 3/4" hose	1 hose connector for 3/4" hose	①
1 wing nut	1 wing nut	②
	1 Wall bracket	③
	1.5 m PVC hose	④
	1 Lutz nozzle, PP	⑤
	2 Hose clips 3/4"	⑥

Tab 5: Scope of supply

4.2 Storage

WARNING

Danger of injury and intoxication when handling hazardous liquids!

- Always wear protective equipment when working on the pump.

NOTICE

Damage of property as a result of incorrect storage!

- Complete emptying of pump tube.
- Store the pump at a protected and easy accessible place in an upright position.
- After pumping hazardous liquids, care should be taken to ensure that any remaining liquid does not drip onto the floor when the pump tube is hung up.
- Store pump protected against weather effects and UV-rays.

5. Installation/Assembly and connection

- Fix the wall bracket (pump set Lutz B2 Vario) in a protected, easily accessible place (→ Fig. 3).

5.1 Fixing of the pump tube

CAUTION

Danger of injury due to tipping over of empty drums and containers!

- The pump tube must always be positioned vertically in the bung hole.
- If necessary, use a drum adapter or emission control drum adapter.

5.2 Safe use

DANGER

Danger of death by electric shock or explosion!

- ▶ Do not immerse the pump deeper than the outrun piece (→ Fig. 1A).
 - ▶ It is not allowed to handle flammable liquids (→ Fig. 1B).
-
- ▶ Do not subject the outrun piece to tension or pressure (→ Fig. 4).
 - ▶ The bending moment M_b at the outlet must not exceed the following values:

Pump material	Maximum bending moment M_b
Polypropylene (PP)	10 Nm
Polyvinylidene fluoride (PVDF)	10 Nm
Stainless steel (SS 1.4571)	30 Nm

Tab. 6: Maximum permissible bending moment M_b

- ▶ At low level of the container splash can occur at the pump foot during operation. Use containers with a cover when pumping hazardous liquids.
- ▶ A foot strainer must be used when pumping liquids containing large mechanical impurities (e.g. fibrous materials).

5.3 Connect pump electrically

DANGER

Danger of death by electric shock!

- ▶ Turn the rotary handle (→ Fig. 5 - item 1) counterclockwise to the limit stop until it is in the OFF position „0“ (→ Fig. 5 - item 3).
-
- ✓ Motor is switched off
 - ▶ The voltage specified on the rating plate must comply with the mains voltage (→ Fig. 5 - arrow).
 - ▶ Connect motor to power supply.

6. Operation

- ✓ All connections and fittings are properly tightened.
- ✓ For safe operation of the pump, sufficient space and a safe stand must be available.

NOTICE

Damage of property as a result of dry running!

- ▶ Supervise pump tube.
- ▶ Ensure that the pump is pumping liquid.
- ▶ Sealless pump tubes may run dry 15 minutes only.

6.1 Starting/interruption, speed control

- ▶ The pump is started by turning the rotary handle (→ Fig. 5 - item 1) clockwise.
- ▶ While turning (→ Fig. 5 - item 2) the speed of the pump is increased simultaneously.
- ▶ For stopping, the rotary handle must be turned back counterclockwise as far as it will go.

6.2 Overload of the pump

The overcurrent release integrated into the motor switches off automatically if the pump is overloaded.

- ▶ In this case turn the rotary handle back to "0" (→ Fig. 5 - item 3).
- ▶ The pump can be restarted after a cooling period.

6.3 Taking out of operation

WARNING

Danger of injury and intoxication when handling hazardous liquids!

- ▶ Always wear protective equipment when working on the pump.
- ▶ Collect any residual leaking fluids from the pump safely and dispose of it in an environmentally friendly fashion.

NOTICE

Damage caused by using incorrect cleaning agent!

- ▶ Substances containing aromatic or chlorinated hydrocarbons (acetone, thinner) must not be used to clean the pump housing.

- ▶ Remove the pump tube from the container carefully and allow the remaining liquid to flow back into the container.
- ▶ After pumping aggressive, tacky, crystallizing or contaminated liquids the pump tube must be flushed and cleaned with an appropriate detergent (→ Fig. 6).
- ▶ The pump tube must always be stored on the wall bracket (→ Fig. 3).

7. Maintenance and servicing

DANGER

Danger of death by electric shock!

- ▶ Disconnect the mains plug before maintenance or servicing the pump.

WARNING

Danger of injury and intoxication when handling hazardous liquids!

- ▶ Always wear protective equipment when working on the pump.
- ▶ Complete emptying of pump tube.

7.1 Observance

- ▶ Only use a non-leaking pump tube:
If fluid escapes above the discharge nozzle at the pump tube, switch off the pump immediately and repair (→ Fig. 7).
- ▶ Ensure that the openings above the pump feet are never clogged.
- ▶ The hose and hose connections must be inspected regularly for leaks and damage.
- ▶ The connecting cable must be inspected regularly for damages.

8. Repairs

- ▶ Repairs should only be made by the manufacturer or authorized Lutz dealers. Even if the connecting cable of this device is damaged, it must be replaced by the manufacturer, his customer service or a similarly qualified person in order to avoid hazards.
- ▶ Only use original Lutz Pumpen spare parts. If other spare parts are used, liability on the part of Lutz Pumpen is obsolete.

8.1 Sending the pump to the manufacturer

- ✓ Pump pressureless
- ✓ Pump completely emptied
- ✓ Pump cooled down
- ▶ Only return the pump to the manufacturer with an accurately completed document of compliance.

9. Waste disposal

Plastic parts can become contaminated by poisonous or radioactive liquids to the extent to make cleaning insufficient.

WARNING

Danger of poisoning and environmental damage due to the liquid pumped!

- ▶ Always wear protective equipment when working on the pump.
- ▶ Before disposing the pump:
 - Leaking liquid must be contained and separately disposed according to the locally applicable regulations.
 - Residues of liquid in the pump must be neutralized.
- ▶ Remove the non-metallic parts and dispose them according to the locally applicable regulations.
- ▶ Dispose the pump according to the locally applicable regulations.

10. Annex

Pump	Lutz B2 Vario PP 32-R-SL			Lutz B2 Vario PVDF 32-R-SL			Lutz B2 Vario SS 28-R-SL		
	500 mm	700 mm	1000 mm	500 mm	700 mm	1000 mm	500 mm	700 mm	1000 mm
Immersion depth									
Flow rate, max. ¹⁾	75 l/min			75 l/min			66 l/min		
Delivery head, max. ¹⁾	7 m wc			7 m wc			6.7 m wc		
Max. temperature of the liquid	-15 °C up to +50 °C			-15 °C up to +90 °C			-15 °C up to +90 °C		
Max. viscosity of the liquid	300 mPas			300 mPas			300 mPas		
Max. density of the liquid	1.3 kg/dm ³			1.3 kg/dm ³			1.3 kg/dm ³		
All parts coming into contact with the medium are made of:	PP, PVDF, Hastelloy C, FPM, PTFE, ETFE			PVDF, Hastelloy C, FPM, PTFE, ETFE			Stainless steel (1.4571), FPM, PTFE, ETFE		
Weight	2.2 kg	2.3 kg	2.5 kg	2.3 kg	2.4 kg	2.6 kg	2.9 kg	3.1 kg	3.5 kg
¹⁾ The maximum flow rate is a value determined by means of a test bench and measured with water at a medium temperature of approx. 20°C. The measurement is carried out at the pressure joint of the pump, without hose, nozzle or flow meter. The flow rate achievable in use is lower and depends on the individual application, the media properties and the configuration of the pump. The max. delivery head is also dependent on the pump design, motor and medium.									

Tab. 7: Technical data of pump

Motor	Lutz B2 Vario 220-240V 50Hz	Lutz B2 Vario 220-240V 60Hz	Lutz B2 Vario 100-110V 50Hz	Lutz B2 Vario 100-110V 60Hz	Lutz B2 Vario 110-120V 60Hz
Voltage	220-240 V	220-240 V	100-110 V	100-110 V	110-120 V
Frequency	50 Hz	60 Hz	50 Hz	60 Hz	60 Hz
Power	200 W	200 W	160 W	160 W	180 W
Rated current	0.9 A	0.9 A	1.7 A	1.7 A	1.7 A
Protection class	II	II	II	II	II
Protection class	IP24	IP24	IP24	IP24	IP24
Absolute humidity	2 up to 25 g/ m ³	2 up to 25 g/ m ³	2 up to 25 g/ m ³	2 up to 25 g/ m ³	2 up to 25 g/ m ³
Continuous sound pressure level ¹⁾	< 70 dB(A)	< 70 dB(A)	< 70 dB(A)	< 70 dB(A)	< 70 dB(A)
Acceleration due to vibrations	< 2.5 m/s ²	< 2.5 m/s ²	< 2.5 m/s ²	< 2.5 m/s ²	< 2.5 m/s ²

¹⁾ The A-weighted emission sound pressure level.

Tab. 8: Technical data of the motor

Techn. Stand: **2018-09**State of Art: **2018-09****Pumpe Lutz B2 Vario****Pump Lutz B2 Vario**

Pos. Item	Best.-Nr. Order No.	Bezeichnung	Description	St. Qty.
	0002-015	Griff kpl. für Motor 220-240V, 50Hz beinhaltet: 0002-061, 0002-062, 0344-050	grip cpl. for motor 220-240V, 50Hz including: 0002-061, 0002-062, 0344-050	2
	0002-016	Griff kpl. für Motor 110-120V, 60Hz beinhaltet: 0002-062, 0002-063, 0344-050	grip cpl. for motor 110-120V, 60Hz including: 0002-062, 0002-063, 0344-050	2
	0002-017	Gehäuse Vorderseite	housing front	1
	0002-029	Griff kpl. für Motor 220-240V, 60Hz beinhaltet: 0002-062, 0002-065, 0344-050	grip cpl. for motor 220-240V, 60Hz including: 0002-062, 0002-065, 0344-050	2
	0002-037	Griff kpl. für Motor 100-110V, 60Hz beinhaltet: 0002-062, 0002-066, 0344-050	grip cpl. for motor 100-110V, 60Hz including: 0002-062, 0002-066, 0344-050	2
	0002-038	Griff kpl. für Motor 100-110V, 50Hz beinhaltet: 0002-062, 0002-067, 0344-050	grip cpl. for motor 100-110V, 50Hz including: 0002-062, 0002-067, 0344-050	2
	0002-039 +	Griff kpl. für Motor 110-120V, 60Hz, Ausführung UK beinhaltet: 0002-062, 0002-070, 0344-050	grip cpl. for motor 110-120V, 60Hz, version UK including: 0002-062, 0002-070, 0344-050	2
	0002-040 +	Griff kpl. für Motor 100-110V, 50Hz, Ausführung UK beinhaltet: 0002-062, 0002-071, 0344-050	grip cpl. for motor 100-110V, 50Hz, version UK including: 0002-062, 0002-071, 0344-050	2
	0002-061	Typenschild 220-240V, 50Hz	type label 220-240V, 50Hz	1
	0002-062	Hinweisschild	label	1
	0002-063	Typenschild 110-120V, 60Hz	type label 110-120V, 60Hz	1
	0002-065	Typenschild 220-240V, 60Hz	type label 220-240V, 60Hz	1
	0002-066	Typenschild 100-110V, 60Hz	type label 100-110V, 60Hz	1
	0002-067	Typenschild 100-110V, 50Hz	type label 100-110V, 50Hz	1
	0002-070 +	Typenschild 110-120V, 60Hz für Ausführung UK	type label 110-120V, 60Hz for version UK	1
	0002-071 +	Typenschild 100-110V, 50Hz für Ausführung UK	type label 100-110V, 50Hz for version UK	1
	0101-020	Wellenführungsrohr PP 1000 mm	inner tube PP 1000 mm	1
	0101-024	Wellenführungsrohr PP 700 mm	inner tube PP 700 mm	1
	0101-028	Wellenführungsrohr PP 500 mm	inner tube PP 500 mm	1
	0101-034	Wellenführungsrohr PVDF 1000 mm	inner tube PVDF 1000 mm	1
	0101-035	Wellenführungsrohr PVDF 700 mm	inner tube PVDF 700 mm	1
	0101-036	Wellenführungsrohr PVDF 500 mm	inner tube PVDF 500 mm	1
	0102-141 ●	Führungsschlauch 500 mm	guide bushing 500 mm	1
	0102-147 ●	Führungsschlauch 700 mm	guide bushing 700 mm	1
	0102-172 ●	Führungsschlauch 1000 mm	guide bushing 1000 mm	1
	0102-210 ●	Antriebswelle Niro 1000 mm	drive shaft SS 1000 mm	1
	0102-213 ●	Antriebswelle HC 1000 mm	drive shaft HC 1000 mm	1
	0102-224 ●	Antriebswelle HC 700 mm	drive shaft HC 700 mm	1
	0102-225 ●	Antriebswelle HC 500 mm	drive shaft HC 500 mm	1
	0102-228	Pumpenrohr PP NM 1000	outer tube PP NM 1000	1
	0102-229	Pumpenrohr PP NM 700	outer tube PP NM 700	1

● Verschleißteil / wearing part + Neuteil / new part

Bei Ersatzteilbestellungen immer Bestell.-Nr. angeben und Fertigungs-Nr oder Auftrags-Nr. des zu reparierenden Gerätes.
Der Nettowarenwert einer Bestellung muß mindestens EUR 25,- (ohne MWSt.) betragen.

When ordering spare-parts always indicate the corresponding order No. and production No. or order No. of the unit to be repaired.
Minimum net value of spare part order shall amount to EUR 25,- (without VAT).

Änderungen vorbehalten. / Subject to change.

Lutz Pumpen GmbH * Erlenstr. 5-7 * 97877 Wertheim * Tel. 09342/879-0 * Fax 09342/879-404

Techn. Stand: **2018-09**State of Art: **2018-09****Pumpe Lutz B2 Vario****Pump Lutz B2 Vario**

Pos.	Best.-Nr.			St.
Item	Order No.	Bezeichnung	Description	Qty.
	0102-230	Pumpenrohr PP NM 500	outer tube PP NM 500	1
	0102-239	• Antriebswelle Niro 700 mm	drive shaft SS 700 mm	1
	0102-240	• Antriebswelle Niro 500 mm	drive shaft SS 500 mm	1
	0102-242	Pumpenrohr PVDF 1000 mm	outer tube PVDF 1000 mm	1
	0102-243	Pumpenrohr PVDF 700 mm	outer tube PVDF 700 mm	1
	0102-244	Pumpenrohr PVDF 500 mm	outer tube PVDF 500 mm	1
	0102-532	Pumpenrohr kpl. Niro B2 1000 mm	outer tube cpl. SS B2 1000 mm	1
	0102-537	Pumpenfuß	pump foot	1
	0102-539	Schlauchstecker Niro 3/4"	hose connector SS 3/4"	1
	0102-540	Pumpenrohr kpl. Niro B2 700 mm	outer tube cpl. SS B2 700 mm	1
	0102-541	Pumpenrohr kpl. Niro B2 500 mm	outer tube cpl. SS B2 500 mm	1
	0300-030	Ejot-PT-Schraube	ejot-PT-screw	2
	0300-102	Drahtfeder	wire spring	1
	0301-087	Zugentlastungsschelle	tension relief clamp	1
	0301-091	Ejot-PT-Schraube	ejot-PT-screw	4
	0301-120	Sechskantmutter	hexagon nut	4
	0301-259	Schneidschraube	tapping screw	2
	0301-262	Gewindestift	threaded pin	1
	0301-266	Linsensenkschraube	counter sunk screw	4
	0301-295	Passscheibe	shim ring	1
	0301-296	Vierkantmutter	square nut	1
	0302-098	Flügelüberwurfmutter G1	wing nut G1	1
	0303-011	Überwurfmutter G 1	wing nut G1	1
	0313-009	Flachdichtung	flat seal	1
	0314-225	• O-Ring FPM	o-ring FPM	2
	0314-231	Flachdichtung FPM	flat gasket FPM	1
	0314-262	• O-Ring FPM	o-ring FPM	2
	0314-268	O-Ring NBR	o-ring NBR	1
	0314-411	• Wellendichtring FPM	shaft seal FPM	1
	0321-147	• Rillenkugellager	grooved ball bearing	1
	0333-050	• Kohlebürste	carbon brush	2
	0336-050	Knickschutztülle	rubber cap	1
	0336-077	Knickschutztülle für US-Kabel	rubber cap for US-cable	1
	0336-109	Kabeldurchführung für Einbaumotoraufhängung	cable bushing for installation suspension	4
	0336-139	Anschlusskabel mit Stecker	connecting cable with plug	1
	0336-145	Anschlusskabel mit Japan-Stecker	connecting cable with Japan-plug	1
	0336-171	Anschlusskabel mit US-Stecker	connecting cable with US-plug	1
	0336-173	Anschlusskabel mit SEV-Stecker	connecting cable with SEV-plug	1
	0343-011	• Rotor Niro DL 28	rotor SS SL 28	1
	0343-153	• Rotor PP DL 32	rotor PP SL 32	1
	0343-252	Auslaufstück PP	outrun piece PP	1
	0343-277	Gehäuse Rückseite	housing back	1
	0343-297	Auslaufstück PVDF	outrun piece PVDF	1
	0343-334	Einhängebügel	clamp	1
	0343-354	Drehknopf	turning knob	1
	0343-365	• Lecklagerkopf	bearing housing	1

• Verschleißteil / wearing part + Neuteil / new part

Bei Ersatzteilbestellungen immer Bestell.-Nr. angeben und Fertigungs-Nr oder Auftrags-Nr. des zu reparierenden Gerätes.
Der Nettowarenwert einer Bestellung muß mindestens EUR 25,- (ohne MwSt.) betragen.

When ordering spare-parts always indicate the corresponding order No. and production No. or order No. of the unit to be repaired.
Minimum net value of spare part order shall amount to EUR 25,- (without VAT).

Änderungen vorbehalten. / Subject to change.

Lutz Pumpen GmbH * Erlenstr. 5-7 * 97877 Wertheim * Tel. 09342/879-0 * Fax 09342/879-404

Techn. Stand: **2018-09**State of Art: **2018-09****Pumpe Lutz B2 Vario****Pump Lutz B2 Vario**

Pos.	Best.-Nr.						St.
Item	Order No.	Bezeichnung	Description				Qty.
	0343-366	Zentrierstern PVDF	guide for shaft tube PVDF				1
	0343-378	Zentrierstern PP	guide for shaft tube PP				1
	0343-384	• Lecklagerkopf	bearing housing				1
	0343-398	Schlauchstecker PP 3/4"	hose connector PP 3/4"				1
	0343-413	Schlauchstecker PVDF 3/4"	hose connector PVDF 3/4"				1
	0343-415	• Kupplungsgehäuse	coupling housing				1
	0343-416	Anschlussstück	connecting piece				1
	0343-417	• Lecklagerkopf	bearing housing				1
	0343-419	Diffusor	diffusor				1
	0343-422	Diffusor	diffusor				1
	0343-423	• Pumpenfuß	pump feet				1
	0343-424	• Kupplungskreuz	coupling cross				1
	0343-443	Diffusor	diffusor				1
	0343-445	• Pumpenfuß	pump foot				1
	0344-050	Einlegeteil	injection mold				2
	0375-035	Elektronik 220-240V, 50Hz	electronic 220-240V, 50Hz				1
	0375-036	Elektronik 110-120V, 60Hz	electronic 110-120V, 60Hz				1
	0375-038	Elektronik 220-240V, 60Hz	electronic 220-240V, 60Hz				1
	0375-039	Elektronik 100-110V, 50Hz	electronic 100-110V, 50Hz				1
	0375-040	Elektronik 100-110V, 60Hz	electronic 100-110V, 60Hz				1
	0002-505	Motor 220-240V, 50Hz	motor 220-240V, 50Hz				1
	0002-506	Motor 110-120V, 60Hz	motor 110-120V, 60Hz				1
	0002-507	Motor 220-240V, 60Hz	motor 220-240V, 60Hz				1
	0002-508	Motor 100-110V, 60Hz	motor 100-110V, 60Hz				1
	0002-509	Motor 100-110V, 50Hz	motor 100-110V, 50Hz				1
	0002-510	Motor SEV 220-240V, 50Hz	motor SEV 220-240V, 50Hz				1
	0002-511	+ Motor 110-120V, 60Hz, UK	motor 110-120V, 60Hz, UK				1
	0002-512	+ Motor 100-110V, 50Hz, UK	motor 100-110V, 50Hz, UK				1
	0102-500	Pumpwerk PP 32-R DL NM 500	pump tube PP 32-R SL NM 500				1
	0102-501	Pumpwerk PP 32-R DL NM 700	pump tube PP 32-R SL NM 700				1
	0102-502	Pumpwerk PP 32-R DL NM 1000	pump tube PP 32-R SL NM 1000				1
	0102-510	Pumpwerk Niro 28-R DL NM 500	pump tube SS 28-R SL NM 500				1
	0102-511	Pumpwerk Niro 28-R DL NM 700	pump tube SS 28-R SL NM 700				1
	0102-512	Pumpwerk Niro 28-R DL NM 1000	pump tube SS 28-R SL NM 1000				1
	0102-560	Pumpwerk PVDF 32-R DL NM 500	pump tube PVDF 32-R SL NM 500				1
	0102-561	Pumpwerk PVDF 32-R DL NM 700	pump tube PVDF 32-R SL NM 700				1
	0102-562	Pumpwerk PVDF 32-R DL NM 1000	pump tube PVDF 32-R SL NM 1000				1

① Ersatzteile für Sonderausführungen**spare parts for special models**

0314-328	• O-Ring EPDM	o-ring EPDM	2
----------	---------------	-------------	---

• Verschleißteil / wearing part + Neuteil / new part

Bei Ersatzteilbestellungen immer Bestell.-Nr. angeben und Fertigungs-Nr oder Auftrags-Nr. des zu reparierenden Gerätes.
Der Nettowarenwert einer Bestellung muß mindestens EUR 25,- (ohne MWSt.) betragen.

When ordering spare-parts always indicate the corresponding order No. and production No. or order No. of the unit to be repaired.
Minimum net value of spare part order shall amount to EUR 25,- (without VAT).

Änderungen vorbehalten. / Subject to change.

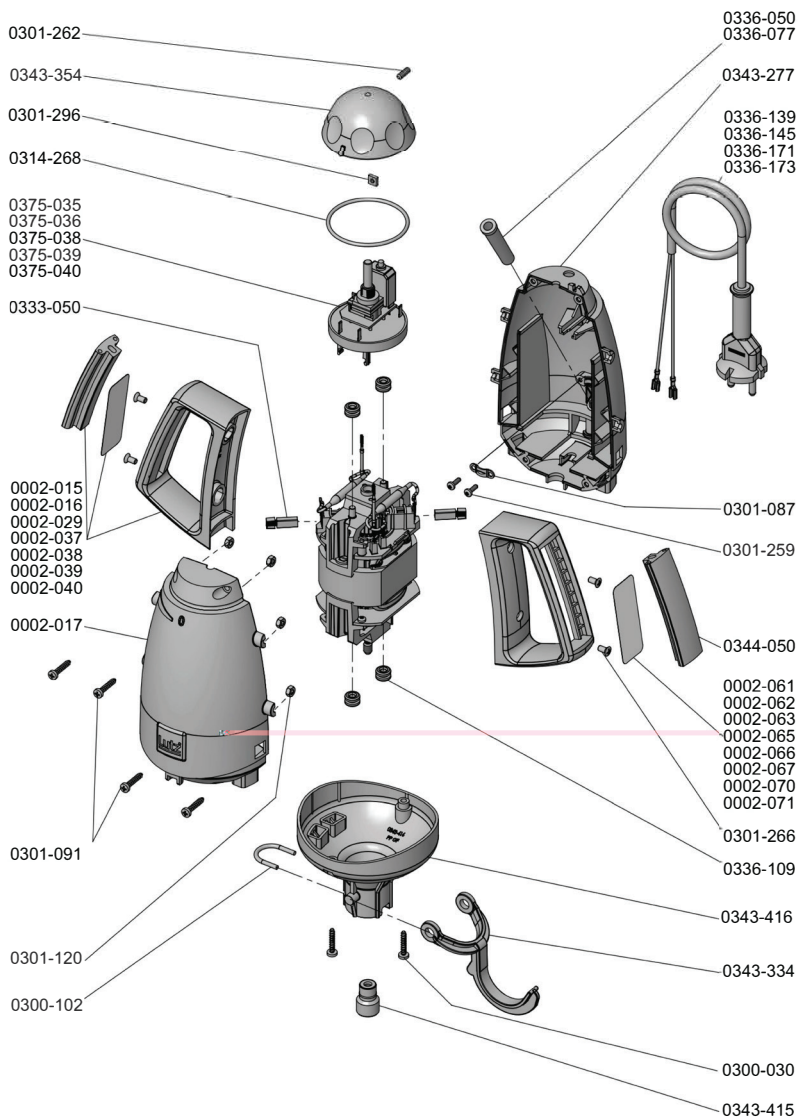
Lutz Pumpen GmbH * Erlenstr. 5-7 * 97877 Wertheim * Tel. 09342/879-0 * Fax 09342/879-404

Ersatzteil-Liste

Techn. Stand: 2018-09
 Pumpe Lutz B2 Vario

Spare Part List

State of Art: 2018-09
 Pump Lutz B2 Vario

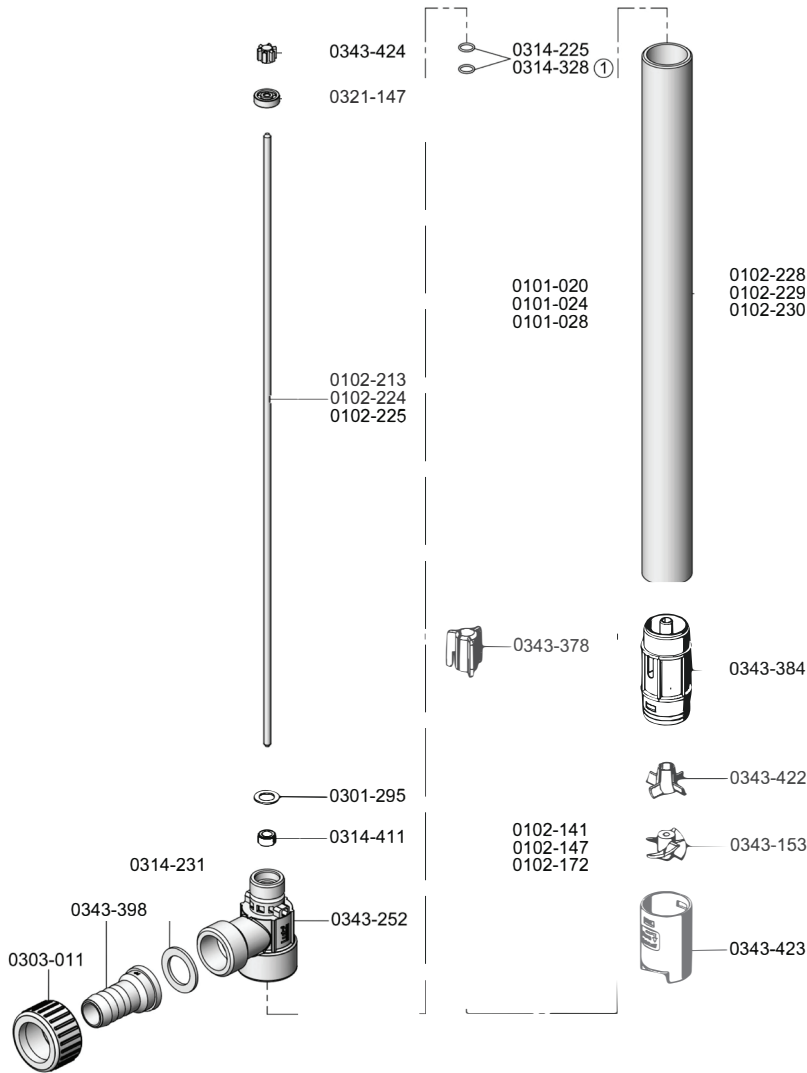


Ersatzteil-Liste

Spare Part List

Techn. Stand: 2018-09
Pumpe Lutz B2 Vario

State of Art: 2018-09
Pump Lutz B2 Vario



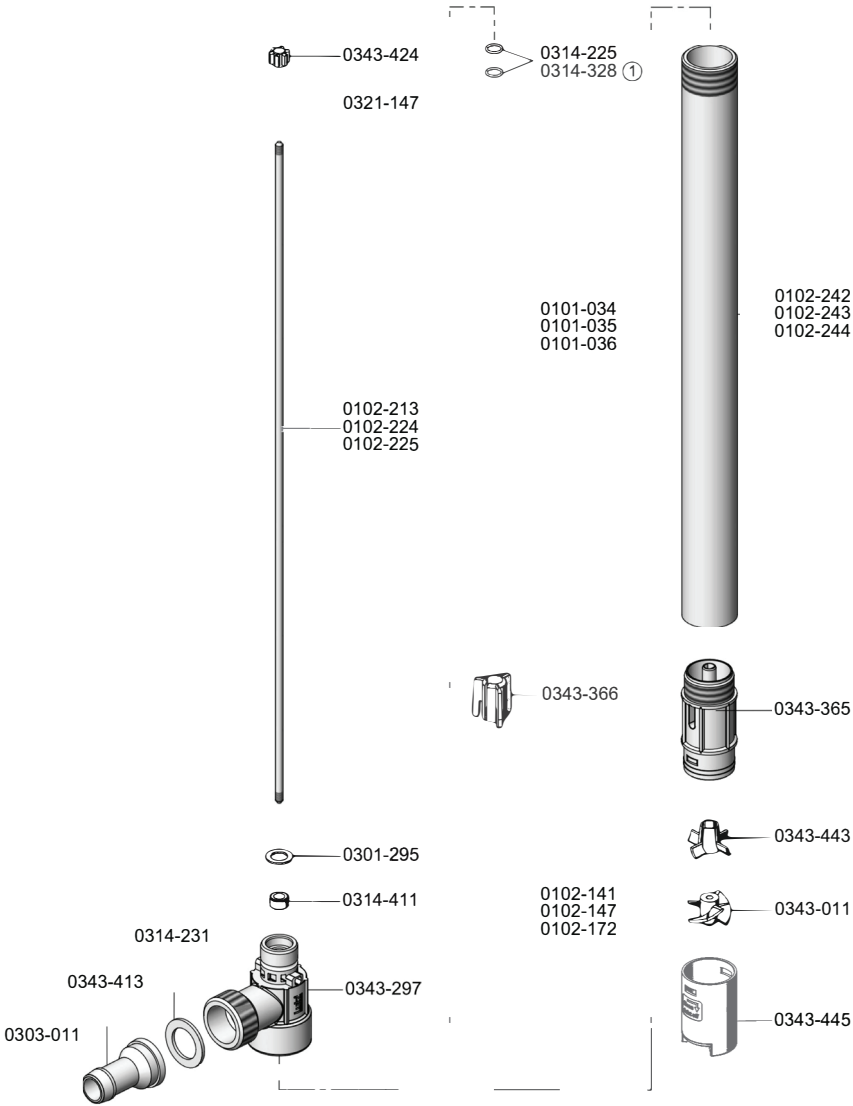
Pumpwerk PP 32-R DL
Pump Tube PP 32-R SL

Ersatzteil-Liste

Spare Part List

Techn. Stand: 2018-09
Pumpe Lutz B2 Vario

State of Art: 2018-09
Pump Lutz B2 Vario



Pumpwerk PVDF 32-R DL
Pump Tube PVDF 32-R SL

Translation of the original declaration of conformity

We herewith declare under the sole responsibility that the following product complies with the EU Directives listed.

Manufacturer: Lutz Pumpen GmbH
Erlenstraße 5-7
D-97877 Wertheim

Product: **Pump**

Types: **Lutz B2 VarioPP 32-R SL**
Lutz B2 VarioSS 28-R SL
Lutz B2 VarioPVDF 32-R SL

Relevant European Directives:

Machinery Directive 2006/42/EC
EMV 2014/30/EU
RoHS 2011/65/EU, 2015/863/EU

Applicable harmonized standards:

EN ISO 12100 EN 55014-1
EN 60335-1 EN 55014-2
EN 60335-2-41 EN IEC 61000-3-2
EN 62233 EN 61000-3-3

Person authorised to compile the technical file

Lutz Pumpen GmbH
Erlenstraße 5-7
D-97877 Wertheim

Wertheim, 16.09.2022



Heinz Lutz, CEO

UK Declaration of Conformity

We herewith declare under the sole responsibility that the following product(s) complies with the requirements of the following UK legislation.

Manufacturer: Lutz Pumpen GmbH
Erlenstraße 5-7
D-97877 Wertheim

Product: **Pump**

Models: **Lutz B2 VarioPP 32-R SL**
Lutz B2 VarioSS 28-R SL
Lutz B2 VarioPVDF 32-R SL

UK Statutory Instruments (and their amendments)

The Supply of Machinery (Safety) Regulations 2008 (SI 2008 No.1597)
The Electromagnetic Compatibility Regulations 2016 (SI 2016 No. 1091)
The Restriction of the Use of Certain Hazardous Substances in Electrical and Electronic Equipment Regulations 2012
(SI 2012 No. 3032 and SI 2019 No. 188)

Relevant standards:

EN ISO 12100 EN 55014-1
EN 60335-1 EN 55014-2
EN 60335-2-41 EN IEC 61000-3-2
EN 62233 EN 61000-3-3

Person authorised to compile the technical file

Lutz Pumpen GmbH
Erlenstraße 5-7
D-97877 Wertheim

Wertheim, 22.08.2022



Heinz Lutz, CEO



Lutz Pumpen GmbH

Erlenstraße 5-7
D-97877 Wertheim
Tel.: (+49 93 42) 8 79-0
Fax: (+49 93 42) 87 94 04
E-Mail: info@lutz-pumpen.de

www.lutz-pumpen.de