

Customize for your every exigency

Instructions for the assembly



- 1) Execute a hole on a level surface (picture 1), with a diameter the same as reported on the label.
- 2) Sandpaper with abrasive paper to remove chip and/or cutting edge.
- 3) Put the fitting from the outside (picture 2, without disassemble) and set it as in picture 3.
- 4) Maintaining the fitting to bite as in picture 3 screw the nut up to the complete lock.
- 5) The wall must be sufficiently rigid

Sector of application



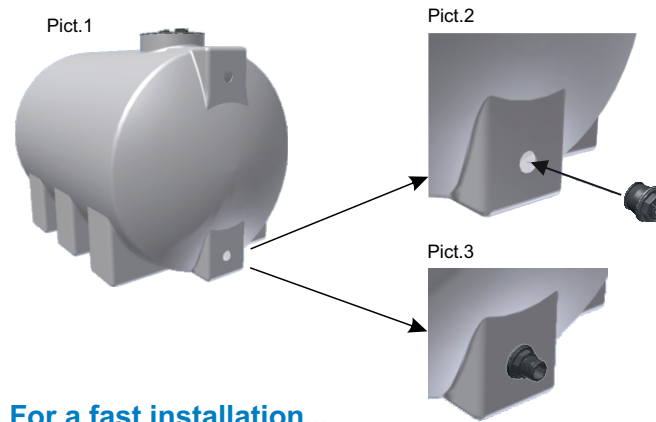
Tanks for Agriculture:
atomizers, irrigation, fertilizers



Tanks for Waters Treatment:
foods, drinks, drinkable water,
enology, harvest rain water, fluid
transport, swimming pools,
aquariums, black waters, pressure
liquid



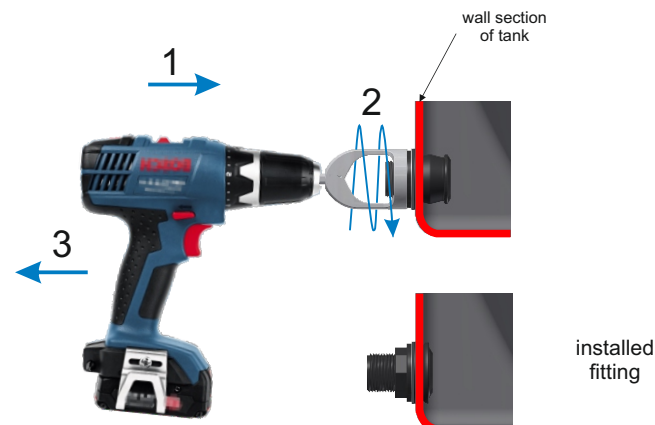
Tanks for Industry:
automotive, naval, chemistry,
petrochemical, fuel distributors,
pharmaceutical, food, waters
treatment, machine utensils,
industrial machineries, industrial
installation



For a fast installation...

use our socket wrench and you do the job

alone in 3 second!



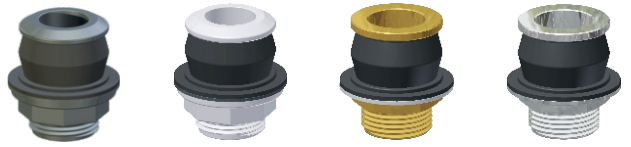
**Fitting to Fast Clutch
for Tanks**



You install alone in 3 second

**Directly from the outside and without the use of
weldings, sealings or inside nut
Waterproof guarantee to 2 Bar for standard product
up to 30 Bar on request**

Rapid Fittings for Industrial and Civil applications



Polipropylene with Fiber Glass

Brass

Stainless Steel

The standard materials are certificated for drinkable water

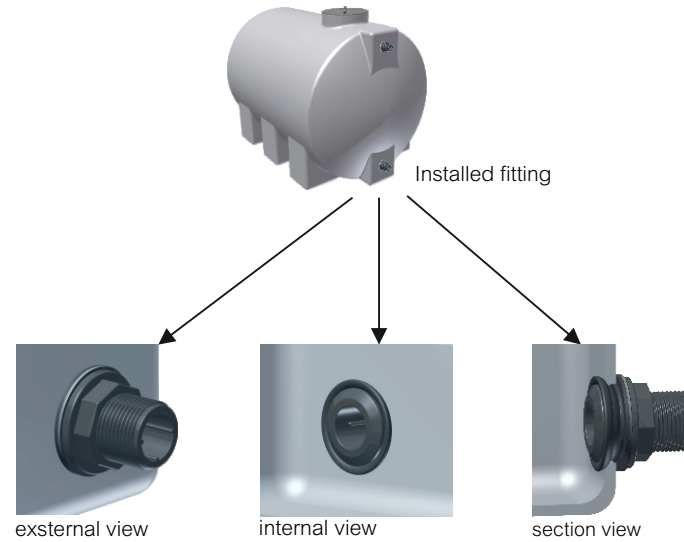
Advantage

- Rapidity of installation on any type of tank in both material plastic and metallic.
- They withstand over 30 Bar, according of the mescoles used and of the conditions of use.
- Ideal for tanks drinkable water containing, oils, wines, juices, petrochemical product, fuels, chemical fertilizers, acids, etc. according of the used models.
- it's possible to insert it in containers that have already contained toxic substances (chemical fertilizer, acids etc...) for inhalation or inflammable*, there for it's not necessary to insert himself inside the containers.
- It withstands thermal excursion of notable entity to -80 °C at +300 °C. According of the used mescoles and of the conditions of use.
- They attenuate the vibrations in the installed tanks in agricultural means, automotive, vibrating machine etc...
- raccomended for tanks underground or walled and fireproof.
- The fittings in plastic material they isolate the tanks offering an important protection from the wandering electric current in the agricultural means, automotive and any other equipment in which the electric current circulates.

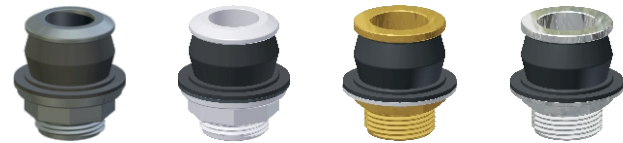
* It's possible to install the fitting if the hole is already existing, or, if the perforation doesn't create sparks or such heat to be able to bait the combustion.

Fitting to Fast Clutch for Tanks

Using the patented technology of **euroraccordi**[®] Patented fittings the derivation is executed from a only technician, on a plain wall. Quickly and Directly from the Outside!



Size available



Polipropylene with Fiber Glass

Brass

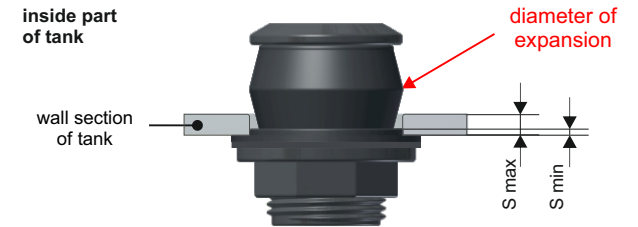
Stainless Steel

1/2"	1/2"	1/2"	1/2"
3/4"	3/4"	3/4"	3/4"
1"	1"	1"	1"
1"1/4	1"1/4	1"1/4	1"1/4
1"1/2	1"1/2	1"1/2	1"1/2
2"	2"	2"	2"

indications for installation

Correct installation

A correct installation foresees that the *diameter of expansion* is positioned to inside the tank with the purpose to allow a correct expansion of the gasket.



	1/2"	3/4"	1"	1"1/4	1"1/2	2"
S min	2	2	2	4	4	4
S max	8	9	10	12	12	12

the measure are express in millimeters

The expansion of the gasket realizes both the waterproof from the inside part of the tank and a real anchorage of the fitting to the wall.



Invalid installation

If the diameter of expansion is interpose to the wall is not possible to realize the anchorage and therefore the waterproof.

