

AquaRite® Flo NG



YEARS OF WARRANTY

3 STANDARD 8000 HOURS

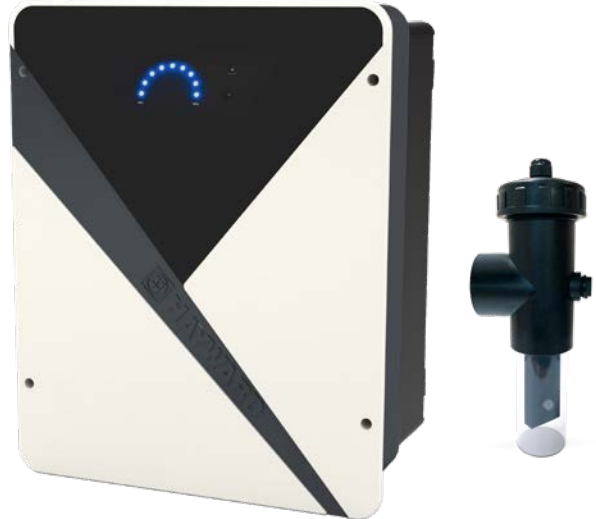
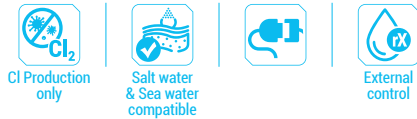


CLEAN AND SAFE: THE FUTURE OF POOLS IS HERE

NEW

- **Salt chlorinator** covering a wide range of chlorine production: 8, 16, 22, 33 and 50 g/h/cl
- Production configuration thanks to the **LED display**
- **Transparent cell** for visual checks on production
- Detection of presence of a pool cover for adjustment of chlorine production
- **Flow detector kit** included by default
- **9 levels possible** of chlorine production

INCLUDED



Complete your installation...

...with **EASY-CHEM-SPH**
and **EASY-CHEM-SRXGS**



Protect your installation

- Protect your installation with variable speed pump **HPOW230VS3** or with single speed pump **HPOWERPRO-A**



AQUARITE®
FLO NG

TRANSPARENT
CELL

Description	AQR-FLO-08NG	AQR-FLO-16NG	AQR-FLO-22NG	AQR-FLO-33NG	AQR-FLO-50NG
Maximum production Cl ₂ /h	8 g/h	16 g/h	22 g/h	33 g/h	50 g/h
Chlorine production	9 levels possible				
Average pool volume	30 m³	75 m³	100 m³	150 m³	200 m³
Salt concentration	From 3g up to 100g of NaCl				
Display	LED light				
Alimentation	230 Vac 50/60 Hz				
Output	8 A 6.5 V	15.5 A 7 V	18.5 A 6.5 V	15 A 9.5 V	15 A 12 V
Consumption	65 W	120 W	130 W	150 W	190 W
Superchlorination mode	•	•	•	•	•
Manual adjustment of Cl (%)	•	•	•	•	•
Gas detector	•	•	•	•	No
Mechanical Flow Switch	•	•	•	•	•
Cover detection	•	•	•	•	•
External redox control	Dry contact				
Alarms	Low production / no flow / system error				
Self-cleaning	By reverse polarity (every 6 hours)				
Electronic box dimensions	254 x 298 x 133 mm				
Packaging dimensions	400 x 400 x 235 mm				600 x 400 x 235 mm
Weight	9 kg	9 kg	10 kg	10 kg	10 kg
Salt chlorination cell	4 titanium plates	4 titanium plates	5 titanium plates	7 titanium plates	10 titanium plates
Minimum flow rate	5 m³/h	5 m³/h	7 m³/h	9 m³/h	9 m³/h
Plate dimensions	100 x 45 mm	200 x 45 mm	200 x 45 mm	400 x 45 mm	400 x 45 mm
Cell mount material	Transparent PVC plastic				
Cell attachment	Threaded for easy cell mounting				
Flexible piping diameter	63 mm				
Cell dimensions	355 x 305 x 305 mm				520 x 305 x 305 mm
Cell cable	(3 x 4) x 1.5 m (extended cable available see spare part catalogue)				(2 x 4) x 1.5 m
Maximum pressure	4 kg/cm²				
Maximum temperature	45 °C				



*NG = NEW GENERATION. © Illustration: McLoumey - DPS Lyon

ELEMENTS OF SERENITY

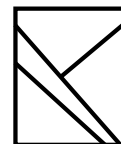


AquaRite® Flo NG

OUR TECHNOLOGY, YOUR SERENITY

With a fresh new design, our well-known salt chlorinator, AquaRite® Flo NG*, keeps all its strengths to make your life easier. Manage disinfection of your pool.

Clean and safe: the future of pools is here.



AquaRite® Flo
NG



HAYWARD®

www.hayward.fr

